

Wind Transmitter First Class

Instruction for Use

4.3350.00.000 / 4.3350.10.000



1. Range of Application

The wind transmitter is designed for the acquisition of the horizontal component of the wind speed in the field of meteorology and environmental measuring technology, evaluation of location, and measurement of capacity characteristics of wind power systems

Special characters are defined and optimised, dynamic behaviour also at high turbulence intensity, minimal over-speeding, and a low starting values.

The measuring value is available as digital signal at the output. It can be transmitted to display instruments, recording instruments, data loggers as well as to process control systems. For winter operation the instrument is equipped with an electronically regulated heating, which guarantees a smooth running of the ball bearings, and prevents the shaft and slot from icing-up.

2. Construction and Mode of Operation

A low-inertia cup star with 3 cups, made of carbon-fibre-reinforced plastic, is set into rotation by the wind. The rotation is scanned opto-electronically, and is converted into a square wave signal. The frequency of this signal is proportional to the number of rotations. Depending on the supply voltage, the output signal ranges between maximal output voltage and ground or a potential (life-zero), lifted by approx. 1,2 V. The supply of the electronics can be done by DC-voltage of 3,3 V up to 42 V at a very low current consumption. An AC- or DC-voltage of 24 V is intended for the separate supply of the optional heating. In all probability, the heating guarantees a trouble-free function of the Wind Transmitter First Class even under extreme meteorological icing-conditions.

The outer parts of the instrument are made of corrosion-resistant anodised aluminium. Highly effective labyrinth gaskets and O-rings protect the sensitive parts inside the instrument against humidity and dust. The instrument is mounted onto a mast tube; the electrical plug-connection is located in the transmitter shaft.

The following parts are included in delivery:

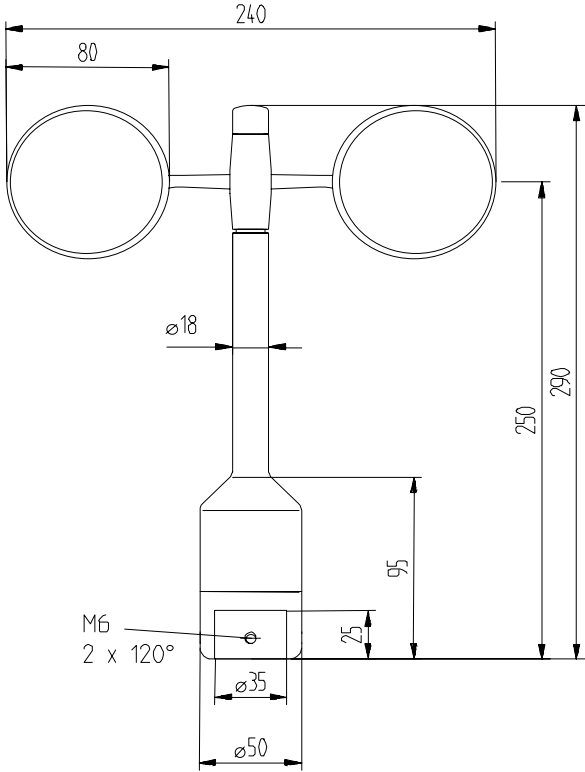
- 1 Instrument
- 1 Connection plug
- 1 Instruction for Use

Order-No.	4.3350.00.000	4.3350.10.000
	with heating	w/o heating

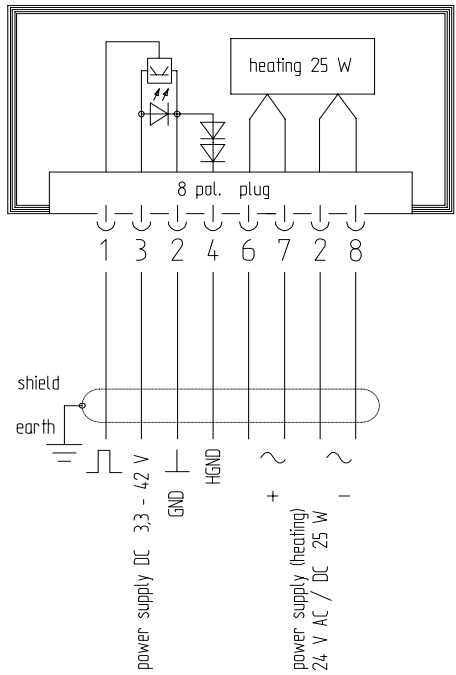
3. Technical Data

Characteristic	Description										
Measuring range	0,3...75 m/s (170 mph)										
Measuring instability (w/o calibration)	0,3...50 m/s < 3% of meas. value or < 0,3 m/s 50...75 m/s < 6% of meas. value										
Survival speed	100 m/s (225 mph) for 1 hour										
Permissible Ambient conditions	- 50...+ 80°C, all occurring situations of relative humidity (incl. dew moistening)										
Output signal	Form rectangle Frequency 1000 Hz @ 50 m/s Amplitude is supply voltage, max. 15 V Load R > 1 kΩ (Push-pull output with 220 Ω in series) C < 200 nF (corresp. to length typical cable < 1km)										
Linearity	Correlation factor r between frequency and wind speed r > 0.999 95 (4...20 m/s)										
Starting velocity	< 0,3 m/s										
Resolution	0,05 m wind run										
Distance constant	< 3 m (acc. to ASTM D 5096 – 96)										
Inclined flow	Measuring value deviation Δv compared with stationary horizontal flow: $\Delta v < 1 \%$ conditions: <table border="1"> <tr> <td>Wind speed</td><td>v = 8 m/s</td></tr> <tr> <td>Horizontal turbulence intensity</td><td>t ≤ 20 %</td></tr> <tr> <td>Turbulence structure (rough country)</td><td>r ≤ 0,8</td></tr> <tr> <td>Average deviation from the horizontal flow</td><td>$\delta \leq 2^\circ$</td></tr> <tr> <td>Standard spreading of the inclined flow angle</td><td></td></tr> </table>	Wind speed	v = 8 m/s	Horizontal turbulence intensity	t ≤ 20 %	Turbulence structure (rough country)	r ≤ 0,8	Average deviation from the horizontal flow	$\delta \leq 2^\circ$	Standard spreading of the inclined flow angle	
Wind speed	v = 8 m/s										
Horizontal turbulence intensity	t ≤ 20 %										
Turbulence structure (rough country)	r ≤ 0,8										
Average deviation from the horizontal flow	$\delta \leq 2^\circ$										
Standard spreading of the inclined flow angle											
Turbulent flow	deviation Δv turbulent compared with stationary horizontal flow -0,5% < Δv < +2% frequency < 2 Hz										
Wind load at 75 m/s	approx. 100 N										
Heating	Surface temperature of housing neck > 0 °C at 20 m/s up to -10 °C air temperature, at 10 m/s up to -20 °C using the THIES icing standard 012002 on the housing neck. Heating regulated by temperature sensor										
Electrical supply for opto- electronic scanning	Voltage: 3,3...42 V DC (galvanic isolation from housing) current: 0,3 ma @ 3,3 V typical (w/o external load) < 0,5 ma @ 5 V (w/o external load)										
Electrical supply for heating	Voltage: 24 V AC/DC (galvanic isolation from housing) Idling voltage: max. 30 V AC, max. 42 V DC Capacity: 25 W										
Connection	8-pole plug-connection for shielded cable in the shaft (see connecting diagram below)										
Mounting	Mounting on mast R 1", for ex. DIN 2441 1½ " with separate adaptor (option)										
Dimensions	See dimension diagram										
Weight	approx. 0,5 kg										
Protection	IP 55 (DIN 40050)										
EMV	EN 61000-6-2:2001 (immunity) EN 55022:2001, class B (interfering transmission)										

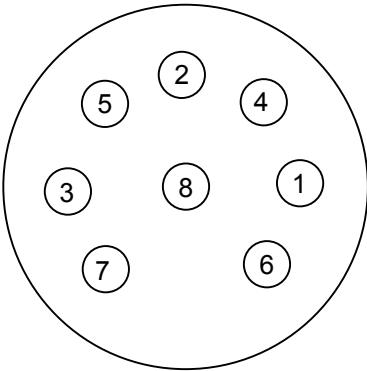
Dimension



Connecting Diagram



Pole figure of the 8-pole plug connector (DIN 45326) with view on the soldered connection side of the socket insert



Contact	Name	Function
1	SIG	Signal (rectangle)
2	GND	Ground
3	+Us	Supply 3,3 V...42 V DC
4	HGND	Ground at life-zero signal
6	HZG~	Heating supply: Voltage: 24 V AC/DC Capacity: 25 W
7		
5	HZG	
8		

4. Preparation for Use

4.1 Selecting the measuring location

In general, wind measuring instruments are supposed to record wind conditions over a large area. According to international regulations, the surface wind should be measured at a height of 10 m above even open terrain, in order to achieve comparable values. An open terrain is defined as terrain where the distance between the wind-measuring instrument and the next obstacle is at least ten times the height of this obstacle (Guide

to Meteorological Instruments and Methods of Observation, Sixth Edition, WMO-No. 8). If this regulation cannot be fulfilled, the measuring instrument should be installed at a height at where the measurement values are not influenced by any local obstacles. In any case, the measuring instruments should be installed at a height of 6 to 10 m above the mean height of the buildings or trees in the vicinity. If it is necessary to install the instrument on a roof, it should be installed in the centre of the roof in order to avoid any preferential directions.

4.2 Mounting of the Wind Transmitter

Mount the transmitter onto a pipe socket of R 1" (Ø 33,5 mm) and a length of 25 mm. The pipe socket must have an internal diameter of at least 25 mm as the wind transmitter must be connected electrically with a plug from below. Solder a shielded cable with a diameter of 6-8 mm and a core cross-section of max. 0,75 mm² to the enclosed plug. For the bi-directional -line of the heating 2 wires can be connected each, in order to keep the line losses low, which are caused by the heating current of approx. 1 A. For the wind transmitter model without heating 3 cores of small cross-section are sufficient. After connection the wind transmitter is put onto the pipe socket, and is fixed at the mast or hanger by means of 2 threaded pins (female hexagon 3 mm).

5. Accessories

For the current supply of the heating you can use for example our power supply unit order no. 9.3388.00.00. In areas with considerable lightning activity it is advisable to mount a lightning rod order no. 4.3100.99.000. For the electrical connection we would recommend a data line 7x0,34 mm² with copper shielded network and weatherproof cover.

6. Maintenance

If properly installed, the instrument requires no maintenance. Heavy pollution can lead to blockage of the slot between the rotating and the stable parts of the transmitter. Thus it is advisable to remove the accumulated dirt from the instrument.

Certain symptoms of wear and tear can appear on the ball bearings after years of use. These symptoms are expressed in a lowered sensitivity of response, standstill or run-noises of the ball bearings. In case that such disturbances might occur we recommend to return the instrument - in original package – to the factory for maintenance work.

ENERCORP instruments ltd

25 Shorncliffe Rd, Toronto, ON, M9B 3S4, Canada

Tel.(877)363-7267

or

(416)231-5335

Tel. (800)363-7267 or (416)231-5335

Internet <http://www.enercorp.com> eMail info@enercorp.com



Technical Alteration reserved