

AC CURRENT SENSOR with 0-5V output

- Output 0 to 5 VDC
- Lowest cost transducer
- No power supply needed

Model 100 SERIES

Our solid core current transducers convert a monitored AC current to a proportional DC voltage of 0 to 5 Volts.

Applications:

They are used to monitor motors, pumps, conveyors, machine tools and any electrical load where an analogue representation is required over a range of currents. All models are CSA approved and UL listed.

Description:

The 100 comprises a current transformer, range selector, rectifier-filter and scaling circuit. Each sensor has three basic user selectable ranges. The 0-5 VDC output is available on two 6-32 screw terminals.

TECHNICAL DATA

Operating temperature: -50C to +65C.

Case: ABS (Meets UL flammability rating 94V-0)

Accuracy: +/-1% of full scale when loaded with 1 megaohm.

Repeatability: +/-1% full scale

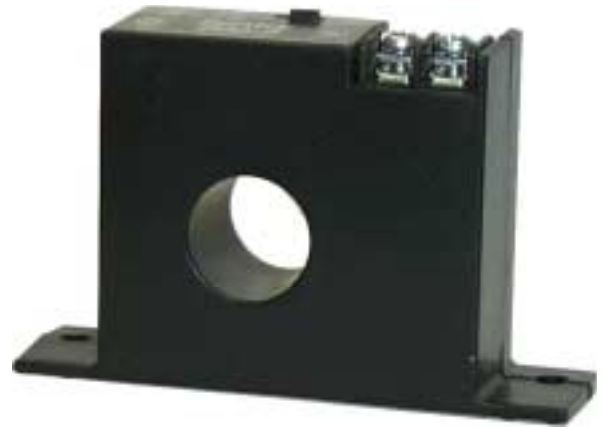
Frequency: Calibrated for 50-60 Hz and within +/-2% from 20-100 Hz.

Response time: 100 msec (10 to 90%)

Ripple: Less than 10 millivolts

Size: 2.18" H x 3.53" W x 0.94" D

Through hole 0.75" diameter



C
U
R
R
E
N
T

Electrical Specifications:

Model	Range	Jumper Amps	Max Cont Amps	Max 6 sec ON 15 sec OFF	Max 1 sec ON 15 sec OFF
100-1	1 to 10	None	80	125	250
	2 to 20	Mid	110	150	300
	5 to 50	High	175	215	400
100-2	10/100	None	200	300	600
	15/150	Mid	300	450	800
	20/200	High	400	500	1000

ORDERING DATA

Model 100-1 for ranges of 1 to 10, 2 to 20 and 5 to 50 amps full scale.

Model 100-2 for ranges of 10 to 100, 15 to 150 and 20 to 200 amps full scale. Output is zero VDC between 0 amps and beginning of range and then proportional to input.

ENERCORP

instruments ltd

25 Shornclyffe Rd, Toronto, ON, M9B 3S4 Tel 1(800)ENERCORP or (416)231-5335 Fax 1(877)ENERCORP or (416)231-7662
 Visit our on-line catalogue at www.enercorp.com our e-mail address is info@enercorp.com